

# Help Labour to win!

If you can help Colin Burgon to win in Elmet please return this form to:

**Colin Burgon Campaign HQ, 57a Main Street, Garforth, LEEDS LS25 1AF.**

- I would like to meet the campaign team. Please telephone me.
- I can display a poster. Please deliver one.
- I would like to help the campaign.
- I would like more details about Labour's election campaign.
- I may need help getting to the polling station.

Name \_\_\_\_\_  
 Address \_\_\_\_\_  
 Postcode \_\_\_\_\_  
 Telephone \_\_\_\_\_

**Hotline  
0113  
287 5198**

76  
32  
30  
17  
10  
13  
8  
7  
3

65  
82  
91  
71

**ELECTION  
COMMUNICATION**



46 28 31  
1 41 3

33

Patricia Machin  
9, Prospect Bank  
Bramham  
WETHERBY  
W Yorkshire LS23 6RS

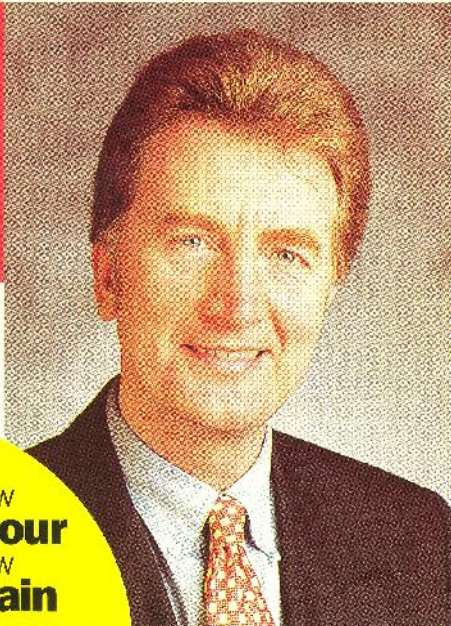
1 3 28 31 41 46

33

new  
**Labour**  
new  
**Britain**



Published by Colin Burgon, 57a Main Street, Garforth, Leeds, LS25 1AF.  
Printed by: HJ Associates, Chair's Colours Ltd, Sheffield, South Yorkshire.



# Colin Burgon

## Fighting for a better Elmet

new  
**Labour**  
new  
**Britain**





# A new start for Britain



## Colin Burgon working for all of us

**Britain needs a Labour Government. Britain needs a change now if it is to meet the challenges that face us all in the 21st century.**



We will not follow the Tory boom and bust path. We will not lie to the British people about our tax plans. We want to tackle tomorrow's problems by earning your trust first.



### A new Labour government will:

- ◆ cut class sizes to 30 or under for 5, 6 and 7 year-olds
- ◆ introduce fast-track punishment for persistent young offenders
- ◆ cut NIIS waiting lists by treating an extra 100,000 patients by cutting bureaucracy
- ◆ get 250,000 under-25 year olds off benefit and into work
- ◆ get tough on government spending and borrowing to ensure low inflation and strengthen the economy



**Pensioner Hilda Walker checking her home security with Colin Burgon.**

**Crime has become the biggest growth industry under the Tories. Crime has more than doubled since 1979. Many people**

**fear they are becoming prisoners in their own homes.**

We understand the anger and fear felt by ordinary

people about crime and disorder. We have led action to stamp down on violent crime, seeking to ban the weapon's criminals and thugs use.

Colin Burgon supports new measures to deal with anti-social neighbours, and action to stop persistent offenders from terrorising neighbourhoods. Labour also recognises the needs of victims of crime, and we would ensure that the needs of victims are given much greater attention. Even simple measures like informing victims of the progress of their case would help relieve the trauma.

## Labour standing up for Elmet

### How you will be a stakeholder in Britain

Colin Burgon, your local candidate says: I have met thousands of people in Elmet from all age groups and walks of life. They tell me that life is more insecure, that our public services are failing, and that they are working harder for less. People are saying to me – "it's time for a change".

### Only Labour Can Beat The Conservatives



*Tory Blow*

**new Labour new Britain**

**Make the difference**



# Working for You



Colin  
**Burgon**



● **Transport** - I will continue to push the transport companies to give local people a better integrated service. The Conservatives gave us privatisation and chaos.



● **Quality of life** - I support Labour legislation which gives us greater protection of our countryside and greenbelt. The Conservatives would allow a damaging 'free for all' approach.

● **Working locally** - I will continue to support the many local voluntary and charity groups which do so much to make our community strong.



● **Employment** - Labour has cut unemployment to the lowest figure for 30 years. We cannot afford to return to record Conservative unemployment levels.



● **Education** - I will work to ensure our schools continue to get increased funding. A good education is vital to our young people's life chances.



**Colin Burgon - Working for You.**



© 2005 Labour Party. All rights reserved. Printed by Labour Party, 100, The New, Wellington Square, Leeds, LS2 9JF.



# A local man for local issues



**Colin Burgon became the first ever Labour MP for Elmet in May 1997. The same hard work and commitment Colin showed to win the seat has been continued with his work as your Member of Parliament.**

Colin was born in Leeds and has always lived in the area. Educated at St Michael's College, he then taught locally for sixteen years. Colin has one daughter, Maria. His interests include Leeds United, the countryside and history.

Colin says "I live in the area, I know it very well, and consider it a great honour to represent it. From day one my aim has been to establish myself as a good constituency MP. I set up an office in Garforth, in the centre of the constituency, which has dealt with thousands of individual cases from Child Support to Pensioners' Incomes."

"As your MP I have, among many other things, pushed for a better deal for pensioners; backed increased funding for our schools and support for teachers; lobbied for legislation to protect our local environment."

When Colin was asked for the highlight of his Parliamentary work he said - "Voting for the Minimum Wage, a measure which is basic to a fair and decent society."

# Elmet



**Val Davies from Alkerton Bywater helps run her local pensioners' organisation.**  
"Colin has been a real supporter in getting pensioners a fairer deal. He ran a very good campaign to make sure local pensioners claimed what they are entitled to - especially the Minimum Income Guarantee. He is always willing to listen and I feel that at last we have got an MP who represents us properly. He's definitely got my vote."



**Elinor Blakeley from Swillington.**  
"As a young person, voting for the first time in a General Election, I want to be represented by an MP who listens to my concerns. I want an MP who supports the Minimum Wage supports the New Deal to help young people into work, and wants to see more young people getting access to higher education. I've checked it out and I'll be voting for Colin Burgon."



**Austin Moon from Whimoor, a retired Miner.**  
"I am very concerned about my local environment and in Colin Burgon I know I have an MP who thinks globally and acts locally. He supports my local environment group and I know he is an active campaigning MP who has opposed open casting, helped to protect our greenfields and supported development on brownfield sites. For a better future, Colin gets my vote."



**Paul & Olwen from Scholes, both teachers.**  
"Colin Burgon worked hard to deliver real improvements to the local school our son attends. As a former teacher he understands the growing pressures teachers face. He shares our view that we need to invest in education to build the best possible future for all our children. By voting for Colin we know we will get an MP committed to working with local schools to deliver quality education."

**Help Colin to build a better Britain.**

**Fill in this form and send it to FREEPOST NEA 2711 LEEDS LS2 3YV.**

**Yes, I want to help Colin...**

- Please register my support and send me a poster to display in my window
- I can deliver some leaflets or help in other ways
- I'm interested in joining the Labour Party, tell me more about it
- I may not be able to vote, please help me to get a postal vote
- I may need help getting to the polling station, please contact me

Name \_\_\_\_\_  
Address \_\_\_\_\_

Postcode \_\_\_\_\_  
Telephone (day) \_\_\_\_\_  
(eve) \_\_\_\_\_

Email \_\_\_\_\_



**Don't miss out!**  
If there is any chance that you might not be able to vote for any reason, don't hesitate to contact us on Colin's hotline or by sending the form on this page.  
If you wish, you can vote by post. It's quick and may make it easier for you to cast your vote.  
**Don't leave it until it is too late!**

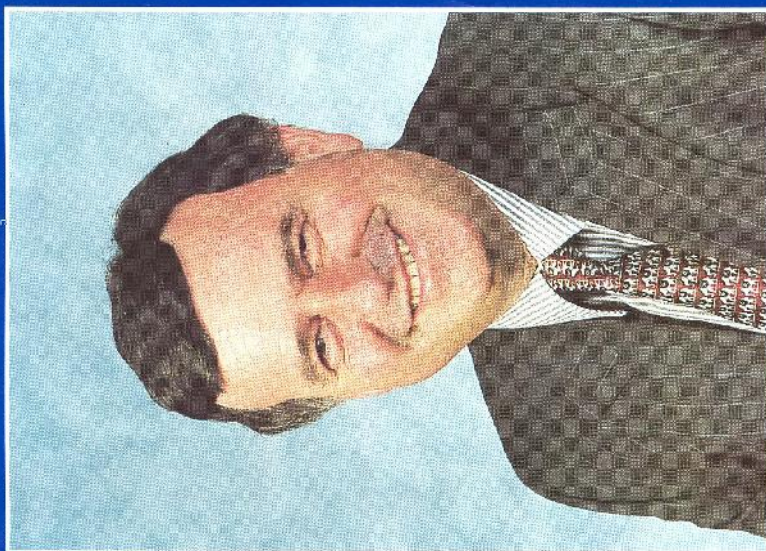


**Colin's hotline  
(0113) 2871553**



MP for Bramham 1983 - 97

## Elmet Constituency



# SPENCER BATISTE

# CONSERVATIVE.



## SPENCER BATISTE

ELECTION COMMUNICATION

- Spencer is married with two children, lives locally and has been the Member of Parliament for this constituency since 1983.
- For most of his working life Spencer has been a solicitor, and involved in business, in Yorkshire.
- Since entering the House he has had spells as Parliamentary Private Secretary to the Ministers for Industry and for Defence Procurement before becoming the Parliamentary Aide to Sir Leon Brittan. He also works on the Science & Technology and Information Committees.



## Elmet Constituency

# CONSERVATIVE.



David Machin  
 9 Prospect Bank  
 Bramham  
 Wetherby  
 LS23 6RS



# What this Election Means for You

## Where I Stand....

- Containing taxes, public spending & inflation
- Bringing jobs & investment to Elmest
- Reducing the size & cost of Government
- Restoring the death penalty
- Introducing National Identity Cards
- Longer sentences for sex & violent criminals
- Referendums on constitutional changes
- Fighting for Britain's Interests in Europe
- Against Current Proposals for a Single Currency
- Maintaining strong national defences
- More choice & excellence in Education & Health
- Protecting the elderly & vulnerable
- Eliminating Social Security abuse

## ...is How I Vote

## Labour's Agenda....

- Higher taxes & public spending
- Yes to the job – destroying Social Chapter
- Costly Regional Government in England
- Breaking up the UK with a Scottish Parliament
- Surrender of the British veto in Europe
- Opposed ALL our tough new laws to fight crime
- Payback for Trade Union block votes & money
- Slash defence spending & jobs
- Restore Council control of schools & hospitals
- Higher inflation hitting the elderly & vulnerable
- Open floodgates to asylum & immigration abuse
- Threat to rural communities & the green belt

## ...Could You Afford It?

SPENCER BATISTE

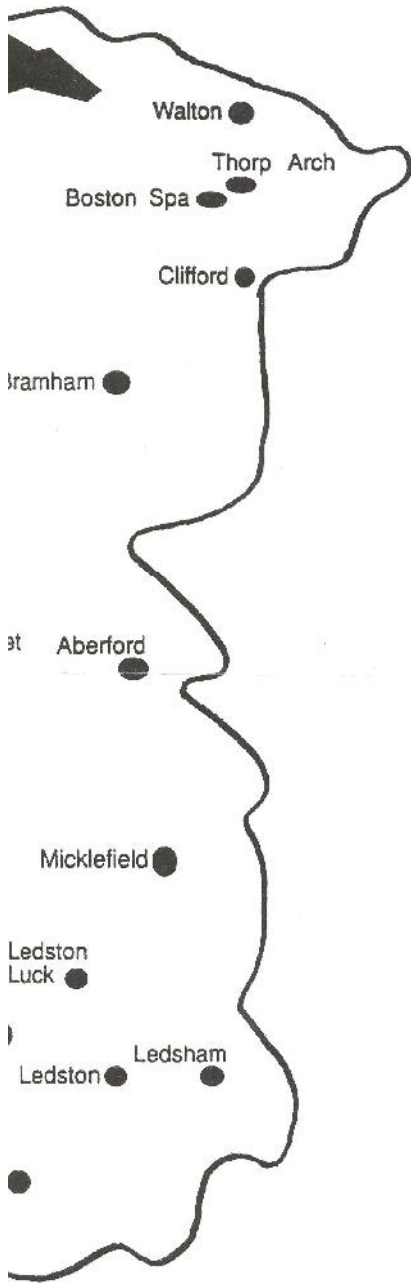
X

Make Your Vote Count

A Lib/Dem vote in Elmest can only let in Labour



# BATISTE



## A Helping Hand

Many constituents seek help from Spencer Batiste at his many surgeries, or on his helpline, or by writing. He always does his best for them. With his experience, his many contacts and his detailed local knowledge, he is the best person for the job.



## The Right Roads

Spencer Batiste successfully campaigned to upgrade the A1 and build the A1/M1 Link Road to help communities strangled by traffic. He stopped the Outer Leeds Ring Road, to protect large areas of essential green belt.



## Freedom for Schools

Schools benefit from freedom from Council control. Labour would scrap Grant Maintained status, restore Council domination, and threaten the independent sector. How hypocritical, when Labour Leaders choose these schools for their own children.



## Protecting the Environment

Our communities are threatened by excessive development. Over many years Spencer Batiste has helped many local action groups fight back against Leeds Labour Council which asset strips rural communities to spend in the City centre.



# INNOVATIVE.





# SPENCER

## Fighting Crime

Record and rising police numbers, more community constables, new technology and tougher sentencing are reducing crime, and keeping criminals behind bars where they belong.



## The Best in the World

Spencer Batiste, who championed the Challenger Tank, at the official handover to the British Army. Labour's promised defence review threatens vital jobs at Vickers.



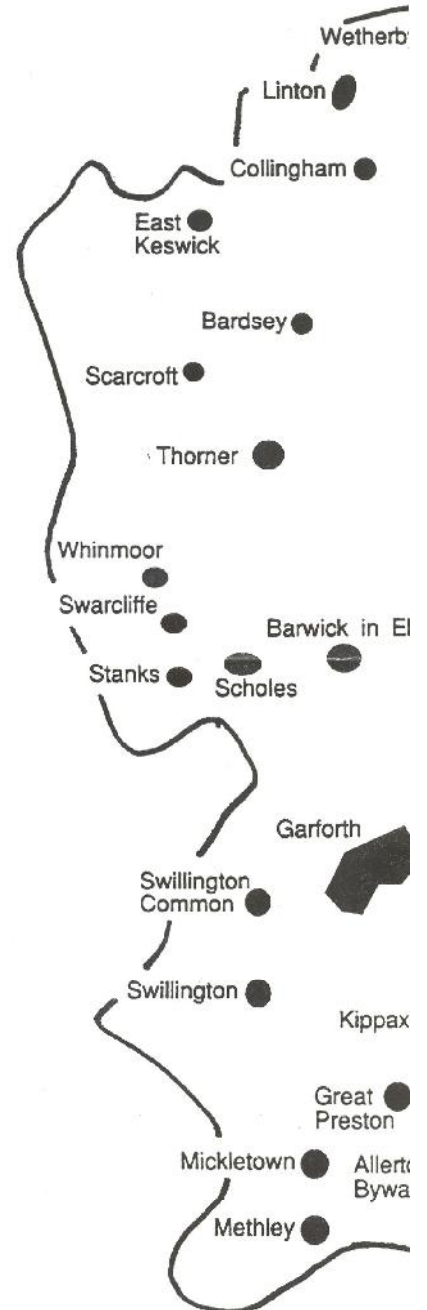
## Working for Jobs

Spencer Batiste has successfully helped bring hundreds of jobs to Elmet. Here in Garforth a textile company is now doubling its investment in the Town after only four years.



## Helping Pensioners

Conservatives have safeguarded pensioners income against inflation and new plans will help them to protect assets and pass them on to their children.



# CONSER



Making democracy truly

# LOCAL

giving local people a  
real say in local  
services.

ONLY THE CONSERVATIVES HAVE  
PROPOSALS THAT WILL RETURN DECISION  
MAKING ON LOCAL SERVICES TO LOCALLY  
ELECTED COUNCILS.

OUR LOCAL TOWN AND PARISH COUNCILS  
WOULD BE GIVEN ENHANCED POWER TO  
IMPLEMENT THE SERVICES THAT WE  
DESERVE AND NEED IN OUR OWN  
COMMUNITIES.

THE CONSERVATIVE PROPOSALS RETURN  
DECISION MAKING ON LOCAL PLANNING,  
STREET CLEANING AND MAINTENANCE,  
ROAD REPAIR, SNOW CLEARING AND  
GRITTING, WETHERBY MARKET, CRIME  
PREVENTION AND COUNCIL HOUSING TO  
LOCALLY ELECTED COUNCILS THAT  
UNDERSTAND LOCAL NEEDS BETTER THAN  
SOCIALIST LEEDS.

FOR LOCAL POWER FOR  
LOCAL PEOPLE

VOTE

DAVID HUDSON

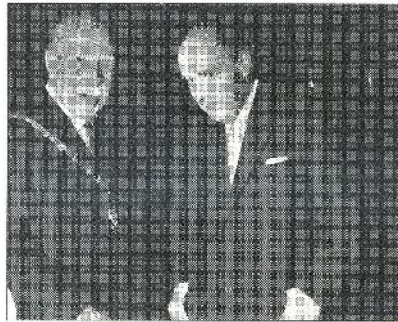
ON MAY 4th

## One Hundred Years Service to Wetherby and District

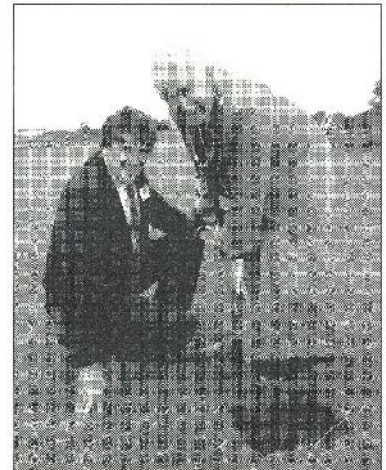
JAMES DAVID HUDSON



JOSEPH HENRY HUDSON



DAVID ELLIS HUDSON



~ 1894 - 1995 ~

## Councillor David HUDSON



Opening Wetherby Bowling Club

Leeds City Council  
Elections

Thursday, 4th May  
1995

Vote

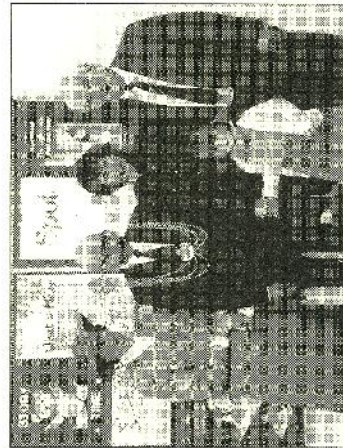
**HUDSON X**

Published by W. P. H. Ltd., 76 Beech Spirey, Wetherby, West Yorkshire LS22 7XP.  
Typeset and printed by W. P. H. Interiors, 13 Church Street, Wetherby, West Yorkshire LS22 6LF.



I have been closely involved in the achievement and implementation of the following schemes:-

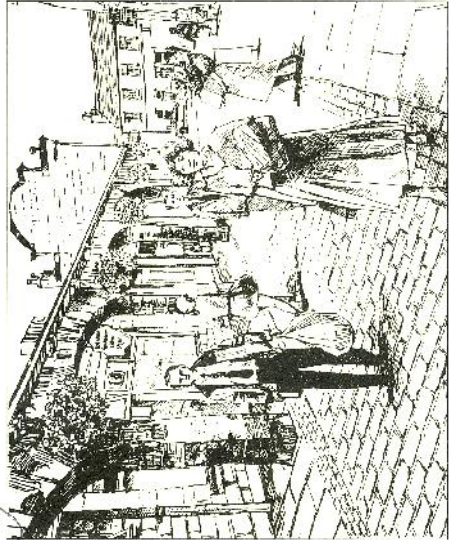
- Wilderness Car Park
- Fosters Playing Field, North Wetherby
- Footbridge over the Wharfe at Scaur Bank
- Lighting of Wetherby Bridge
- Enlargement of the Swimming Pool Car Park
- Raby Park Public Open Space
- Rugby, Cricket and Bowling facilities at Grange Park
- Refurbishment of Wetherby Town Hall
- Access for the public to river frontage at Wharfedale Lawn
- Provision of pedestrian underpass beneath A1 road from the Hallfield Estate
- The formation of the Wetherby Civic Society
- The refurbishment and floodlighting of the old Grange Park Gatehouse
- Christmas lights
- The Childrens Room at Wetherby Library
- Wetherby in Bloom
- Making up of Grove Terrace/Grove Place, Boston Spa



**Councillor David Hudson  
Delivers the Goods**

**Councillor David Hudson is committed to achieving:-**

- The early repair, improvement and re-opening of the Barleyfields Community Centre
- All-weather playing surfaces or Sports Halls for the communities of Wetherby and Boston Spa
- A landscaped park area on 7 acres of Council land at Quarry Hill Lane
- A Clubhouse and Changing Rooms on The Ings for Wetherby Youth Sports
- The opening up and improvement of public footpaths, particularly the former railway walkway and the Riverside
- The refurbishment of The Shambles
- The adoption of foul sewers on the Rivers Estate, North Wetherby
- Further enlargement of Swimming Pool Car Park



**Councillor David Hudson  
To Get Things Done**

## Get more **POLICE** on the streets!

In our recent city wide survey you told us that you wanted more police on the beat.

We put proposals to Labour run Leeds that an investment of £1.5m would put 60 more policemen on the beat throughout the City Council area - despite having the money, Labour refused to spend it on cutting crime, instead they will spend the same amount on the City Centre and pedestrianisation.

**A CONSERVATIVE VOTE WILL  
PUT MORE POLICE ON THE  
BEAT IN WETHERBY WARD.**

Local Services are the real issues  
in Local Elections.

**Vote Local - VOTE HUDSON  
ON MAY 4<sup>TH</sup>**



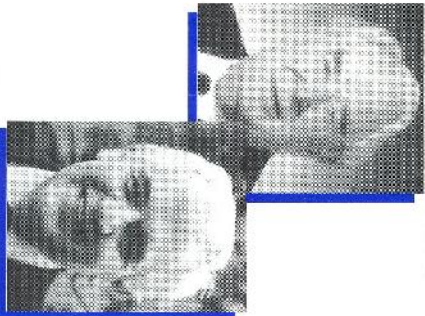
PLEASE DISPLAY IN YOUR WINDOW

**MAKING A DIFFERENCE FOR WETHERBY**

Vote **CONSERVATIVE**



**TIM MOSKIN**  
played  
**DAVID HUDSON**



**David HUDSON**  
*1999*  
**Gerald WILKINSON**

For the last 45 years I have had the honour of representing Wetherby and the Wetherby Ward on the Parish, Town, Rural, County and City Councils. During this time I have spent a large proportion of my time attending to constituents' problems and fighting to secure a fair share for Wetherby Ward.

Gerald Wilkinson is in his second year as Town Mayor of Wetherby and is Chairman of the Town Council. He is Chairman of the Town Councils Finance Committee and has active links with Wetherby in Bloom, arts festival and Twinning Committees. As the Council Representative, Gerald is married with 2 children and is in partnership with his wife in a retail business in Wetherby.

Born and educated in Yorkshire he has lived in Wetherby for 27 years. His keen interest in sport includes playing cricket for Wetherby Cricket Club for many years. A past football association referee and referee instructor and is a playing member of Harrogate Golf Club. Gerald is passionately interested in furthering local issues concerning Wetherby and District.

***Making a Difference For Wetherby***

- The Ings Sports Centre in Wetherby
- A Gymnasium and Sports Hall for Wetherby High School
- Boston Spa School Sports Initiative
- The adoption of foul sewers on the Rivers Estate in the north of Wetherby
- More money for highway repairs
- A ban on H.G.V'S on Spofforth Hill, Wetherby.
- A millennium green on Council-owned land at Quarry Hill lane, Wetherby

**WETHERBY MEN FOR THE WETHERBY WARD.**



# Working for YOU....

## The Conservative Vision

### QUALITY PUBLIC SERVICES

The Conservative's alternative budget for Leeds is a costed budget, putting resources into Education, Community Safety and Social Services, ensuring that all the people of Leeds receive quality public services.

### EDUCATION

We would direct an additional £1.5 million into local schools for books and equipment and for capital funding for school repairs. We will embrace the national children's strategy and set up afterschool and homework clubs

### LAW AND ORDER

We will introduce a tough new approach to community safety that puts the police in partnership with the local community. We will provide funding for extra community constables to offset the cut of over 100 police officers this year by the

**LABOUR GOVERNMENT.** This will produce effective and visible community policing on our streets.

### HOUSING

We will take measures to end Labour's years of housing mismanagement. We will conduct a full review of the housing management service. We will continue our commitment to new social housing developed by housing associations and other organisations. We are committed to a full repairs programme. Conservatives will help tenants have homes worth the rent they pay. We will make a difference for housing tenants all over the City.

### PROTECTING THE ENVIRONMENT

We are totally opposed to the green field developments proposed in the Labour Unity Development Plan. We want these proposals scrapped.

### TRAFFIC CONGESTION

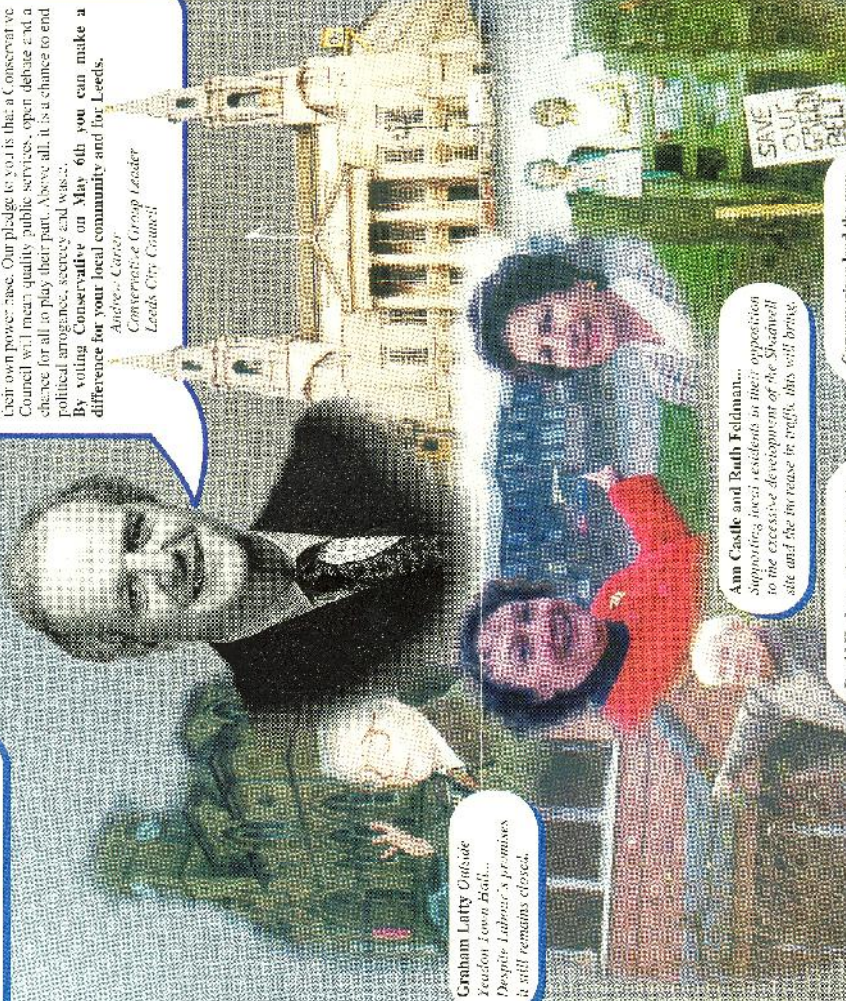
We would open new urban railway stations on existing areas, with park and ride facilities and an improved public transport network. The anti car policies of the Lib-Lab alliance will kill off the city centre and put further pressure for development to take place on green field sites.

Dear Resident

City like Leeds means being prepared to represent the interests of all - often irrespective of party politics. Over the 19 years of Labour control, we have seen income tax, council tax, council house rents, council house repairs, council house maintenance and waste. Labour are committed only to securing their own power base. Our pledge to you is that a Conservative Council will mean quality public services, open debate and a chance for all to play their part. Above all, it is a chance to end political arrogance, secrecy and waste.

By voting Conservative on May 6th you can make a difference for your local community and for Leeds.

Andy, Carol  
Conservative Group Leader  
Leeds City Council



Graham Latty Outside  
Leeds Town Hall...  
Despite Labour's promises  
it will remain closed.

Ann Castle and Ruth Feldman...  
Supporting local residents in their opposition  
to the excessive development of the Shadwell  
site and the increase in traffic, this will bring.

David Hudson... Respecting the  
results of Labour's 19 years of  
disastrous housing policy.

Conservatives lead the way...  
Campaigning against Labour's  
attack on the Green Belt.

## 19 YEARS OF LABOUR IN LEEDS "...the couldn't care less Council"

**A LABOUR COUNCIL TAX RISE OF 13.5% IN THE LAST TWO YEARS.**

An increase of over £90 on a Band D property, more than five times the rate of inflation!

### A LABOUR BUDGET

They failed to invest properly in education, social services, highways maintenance and footpath repairs

### LABOUR MSMANAGEMENT

That keeps over 3000 council houses empty costing £0.1 million in lost rent revenue and over £5 million in record levels of rent arrears every year.

### MSMANAGEMENT

That closes old people's homes and fails to maintain the remainder to the proper standard required and which has no proposals to do anything about it.

### MSMANAGEMENT

That leaves the public transport strategy for the City in tatters, with the Labour government refusing to fund any of the council's strategic options

### LABOUR SECRECY

That fails to tell local people that municipal buildings are **UNSAFE**, that the City's sports facilities are under threat of closure and are in urgent need of repair

### LABOUR WASTE

That has landed the City with over £700 million of debt - a debt larger than most Third World Countries, the interest payments on this debt cost **YOU** £60 million every year.

**WASTE** That sees Labour spending £140k of **YOUR** money on their own newspaper.

**ENOUGH IS ENOUGH**

...Vote to make a Difference

ON 6th May

Vote CONSERVATIVE

# ...the CONSERVATIVES

## MAKING A DIFFERENCE FOR LEEDS



May 2000

# WETHERBY CONSERVATIVES

# IN TOUCH



LOCAL GOVERNMENT ELECTIONS 4th MAY 2000

## A personal message from Gerald



I was elected in May of last year to represent Wetherby Ward on Leeds City Council in a by-election. This year I stand again for election for a four year period and ask for your vote on May 4th to allow me to continue to fight for the people of Wetherby against the socialist-controlled Leeds City Council.

When elected last May I was selected Chairman of the Wetherby Community Involvement team - a part of the modernisation of local government. This team is still in its embryonic stage and I look forward to developing this team together with my two Ward colleagues, Councillors David Hudson and John Procter.

Our fight still goes on to install CCTV and to ban heavy goods vehicles from Wetherby town centre. The town has been repaved - James Street car park has been refurbished and the same is to be done to Crossley Street car park. We fought to prevent asylum seekers into Clifford and we are continuing our fight to prevent Church Fields in Boston Spa from being developed. A millennium green on council-owned land at Quarry Hill Lane is close to an approval being confirmed.

### YOUR VOTE COUNTS

### ABOUT GERALD

Gerald is a local man who lives and works in Wetherby. He is a partner, with his wife Rita, in their family owned retail shop in Wetherby town centre and therefore has a keen interest in local issues.

He is in his third year as a Town Mayor and Chairman of Wetherby Town Council. He is also a school governor at Lady Hastings, Collingham, a member of Wetherby and District Chamber of Trade and Commerce, being its President in 1993/4 and is the Council's representative on Wetherby in Bloom, Twinning Association, Tourist Group and Wetherby Market.

**VOTE** GERALD WILKINSON **X**

# GERALD WILKINSON - PUTTING THE PEOPLE OF WETHERBY FIRST



Its YOUR choice on May 4th  
Its YOUR chance to end 20 years of Labour's  
failure, incompetence and mismanagement

OUT

LABOUR

- The Party of **waste, secrecy, incompetence** and **mismanagement**.
- The Party of **political interference** in our schools and education service, **poor standards, poor investment** and **school closures**.
- The Party who want to introduce road pricing and work place charging in Leeds. **£2 every time you drive into the centre of Leeds**. The Party that fails to fund the city's key transport initiatives.
- The Party that is **building on Green Belt** land and planning more development.
- The Party that has failed the **elderly and disabled** in Leeds. The Party excessive home care charges, disability benefit cuts and the closure of old peoples homes and day care centres.
- The Party that has cut the number of police officers on our streets. **Over 200 police officers** lost since Labour came to power in 1997. A further **300 police officers to go** due to massive budget cuts imposed by the Labour government.

LET DOWN BY LABOUR

IN

CONSERVATIVE

- The Party of **strong, effective opposition** to Labour in Leeds.
- The Party that is committed to **parental choice** in education and to the proper funding of our education system. The party that will **clean up and clear out** the political interference in our schools.
- The Party that will rid Leeds of its transport chaos. The **only** Party that will oppose the introduction of **road pricing and work place charging in Leeds** by the **Labour Council**.
- The Party who will protect our **environment** and our precious **Green Belt land**. The Party that is totally opposed to the green field developments proposed in the Labour Unitary Development Plan.
- The Party that will speak up for the elderly and disabled in Leeds. We will reverse the excessive home care charges **imposed by the Labour Council** and we will campaign against disability benefit cuts and the closure of **old peoples homes and day care centres**.
- The Party that will introduce a tough new approach to **Law and Order**. We will establish a new partnership between the Council and the Police. We will provide funding for new community constables to be deployed around the city to offset the **massive cuts** in police numbers imposed by the **Labour government**.

MAKING A DIFFERENCE WITH THE CONSERVATIVES

Polling Stations are open from  
7am to 10pm

If you need a lift to the Polling  
Station please ring (0113) 249 2502

SEND A POWERFUL MESSAGE TO LABOUR LOCALLY AND NATIONALLY ON MAY 4th

VOTE CONSERVATIVE



# VOTE TO SAVE THE POUND



**P**olling Day, 7th June, represents possibly the last opportunity that the British people will have to vote to **Keep the Pound** and to maintain control over our own affairs.

Labour are desperate to join the Euro currency and scrap the Pound, even though two out of three voters don't want this to happen. The Lib Dems would scrap the Pound and join a Federal Europe immediately.

Scrapping the Pound could cost £1,000 per elector - equivalent to over £50 million in each constituency. With our schools and hospitals struggling, just imagine how that money could be better

spent. Not only would joining the Euro mean handing over control of the British economy to Brussels, but it has also been calculated that it would cost £36 billion.

With the Conservatives, Britain will keep the Pound and you'll keep your £1,000. We believe that it doesn't make sense to join the Euro and that Britain should not waste the £36 billion it will cost to change to a new currency.

**The countdown has begun to Keep the Pound.**

Only a vote for the Conservatives on 7th June will keep the Pound, in stark contrast to Labour and the Liberal Democrats.



- A decision to scrap the Pound would be **IRREVERSIBLE**. Another Labour government would scrap the Pound within 2 years.
- The cost to Britain of Labour scrapping the Pound would be **£36 BILLION**. Just imagine how many hospitals and schools that could buy.
- The single European currency is part of a project to create a European political union. The British people clearly want to maintain their political and economic independence.
- Joining the single European currency would mean handing over to Brussels the power to set our interest rates.
- Britain has the fourth largest economy in the world. We will be



On 7th June, vote as if  
the Pound depends  
upon it.



**WE ♥ THE**

**Vote**

**Conservative**

[conservatives.com](http://conservatives.com)

**Conservatives** X

Promoted by David Prior on behalf of the Conservative Party, both of 32 Smith Square, London SW1P 3HH & printed by Westcountry Design & Print, part of Northcliffe Newspapers, Heron Road, Exeter, Devon EX2 7NF



# Common Sense

From Andrew Millard  
Conservative candidate for Elmet

General Election  
Special Edition



Andrew Millard's  
**five**  
pledges:

- 1. restore the 403 local police officers cut by Labour**
- 2. increase pensions by up to £6.80 a week**
- 3. see that education and the NHS receives the right funding**
- 4. save and protect the Green Belt**
- 5. keep the Pound**

## Millard: 'Labour has let us all down on crime'

Andrew Millard has been meeting Elmet residents up and down the constituency and the concern he hears time and time again is about rising crime.

Labour has broken its promise to be 'tough on crime'. With less police on the streets and more convicted criminals being let out of prison early, crime continues to rise. In fact violent crime is up 21% in the last year alone.

Andrew Millard's common sense policy is to increase the number of police on the streets and give them greater powers.

"But we don't just need more police resources," he says.

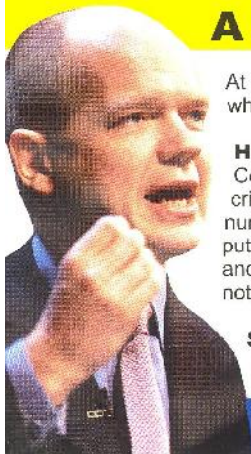


Andrew Millard on patrol with Community Police Officer Paul Rowden.

"Stiffer penalties are needed, particularly for persistent offenders. And criminals should be made to serve the sentences handed down by the courts.

"Labour has cut the number of police in West Yorkshire by 403 since 1997. This is an appalling record and one the Conservatives and I pledge to reverse."

### A message from William Hague



At this General election, you can decide what kind of country you want to live in.

#### How safe is our country?

Conservatives will wage war on the criminal. Labour have cut police numbers and violent crime is rising. I will put more police back in our communities and ensure they spend their time policing not bogged down in paperwork.

**Spending your money wisely.**  
Our hard working teachers and

nurses deserve to be allowed to do their jobs. Conservatives will spend your money better, cut your taxes.

**Europe and keep our pound.** I offer a very straightforward policy. Britain should be in Europe not run by Europe and we will keep the Pound. Labour want to scrap the Pound which will cost nearly £1,000 for every voter.

Conservatives Common Sense policies can win this election.

Produced by Richard M. Barker, Ridgeard House, 5 The Shambles, Wetherby LS22 6NG  
on behalf of Andrew Millard, Ridgeard House, 5 The Shambles, Wetherby LS22 6NG  
& printed by Thornton Print Ltd, North Tyneside, Est. Newcastle upon Tyne NE12 9BZ.

[www.conservatives.com](http://www.conservatives.com)



# About Andrew Millard...

0116 2322363

10 Bluebell Drive  
Groby Leicester



Andrew Millard and his family.

Andrew Millard is a director of a telecommunications regulatory body. Married, his family moved to the constituency last year. Cristina, his wife, is a local school governor.

"Elmet deserves a first-class <sup>LE6</sup> Conservative MP, someone who passionately believes in this country" says Andrew. "Under Labour, we are increasingly being made to feel strangers in our own land; they do not understand what matters to the people of Elmet. I pledge to represent all sectors of this diverse constituency.

"I will save and protect our countryside. I believe in a first-rate education for all. I abhor Labour's 'stealth' taxes. I will reverse the decline in police numbers. I want a strong NHS. I will respect pensioners. And I want to be in Europe, but not run by Europe fighting with every breath in my body here and in Westminster to keep this country's currency and to keep this country out of the hands of Brussels' bureaucrats."



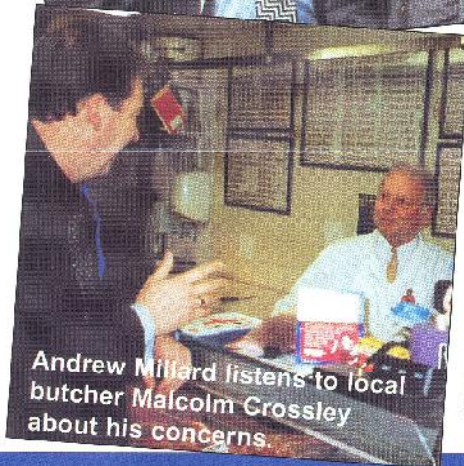
Andrew Millard talks to local Garforth rail users about the issues that really matter to them.

## Fuel prices rocket under Labour

Taxation on fuel has rocketed under Labour. UK motorists now pay more tax on petrol and diesel than anywhere else in Europe.

In rural areas, a car is not a luxury - it is a necessity. The huge rise in the price of fuel is making travelling by car unaffordable. Motorists have already suffered enough but now Labour and their Liberal allies want them to suffer even more by the introduction of a whole raft of new 'stealth' taxes.

Motorists and hauliers alike have had enough. Stop these extra taxes by voting Conservative.



Andrew Millard listens to local butcher Malcolm Crossley about his concerns.

On Polling Day, your vote will make the difference. If you would like to contact Andrew for any reason, please contact him on:

[andrew@elmet Tories.com](mailto:andrew@elmet Tories.com)

Vote **Andrew**

# Millard

Conservative X

## We need your help

If you would like to show your support for **Andrew Millard** we would be delighted to hear from you. If you can help with any of the following, please complete and return this form to the address below, and we will be in touch very soon.

**DAX**

I can help by:

- delivering a few leaflets
- displaying a poster
- contacting electors
- helping on polling day
- doing clerical work
- contributing to the **Fighting Fund Appeal**. I enclose a cheque for:

<input type="checkbox"/> £200	<input type="checkbox"/> £30
<input type="checkbox"/> £100	<input type="checkbox"/> £20
<input type="checkbox"/> £50	<input type="checkbox"/> Other

(cheques payable to Elmet Fighting Fund)

I would like to:

- vote by post or proxy as I will be away on polling day
- join the **Conservative Party**

Name:

Address:

Tel:

Email:

Please return to:  
**Andrew Millard's Campaign HQ,**  
Ridgeland House,  
5 The Shambles, Wetherby,  
LS22 6NG



# Wetherby Ward CONSERVATIVES

LOCAL GOVERNMENT ELECTIONS THURSDAY 2ND MAY



## A Personal Message From John Procter

**I HAVE REPRESENTED WETHERBY AND ITS SURROUNDING VILLAGES FOR APPROACHING 10 YEARS. IN THAT TIME I HAVE WORKED HARD TO PRESERVE OUR VILLAGE AND TOWN COMMUNITIES, IMPROVE LOCAL FACILITIES AND MOST IMPORTANT, REPRESENT THE VIEWS OF ALL THOSE WHO LIVE IN THE WETHERBY WARD.**

I have been most outspoken on planning issues and in particular the Unitary Development Plan, conceived by Labour and supported by the Liberal Democrats, the plan brings no positive benefits to our area and if implemented in its present form would see hundreds of acres of current green belt put under concrete.

This election is solely about who YOU believe is the best person to represent YOUR views on Leeds City Council. Over the years I have championed hundreds of causes and got results.

In the last 5 years Labour run Leeds has increased your council tax over 30%, you may ask where all the money has gone?

Labour would rather spend your money on Millennium Square £12 million, City Square £2.5 million, UDP inquiry £6 million and redevelopment at South Leeds Stadium £20 million, than the real areas of need. There is currently a repairs backlog of £1 billion on Council Housing, £42 million on Road Maintenance and £25 million on Leisure Centres.

**I HOPE ON THURSDAY 2ND MAY 2002  
I CAN COUNT ON YOUR SUPPORT.  
PLEASE USE YOUR VOTE.**

*John Procter*

## Profile

John is 35 years old and recently became engaged to Rachael, a North Yorkshire farmer's daughter. John is a local man and has lived in Thorncliffe most of his life, he runs a busy industrial maintenance company based in Leeds.

A lot has been achieved in our area over the last few years there is still a lot to do if re-elected John would

- **WORK HARD TO PROTECT OUR VILLAGE COMMUNITIES.**
- **RESIST THE PRESSURE OF EVER MORE DEVELOPMENT.**
- **DEVOTE THE TIME NECESSARY TO SOLVING THE AREAS TRAFFIC AND PARKING PROBLEMS.**

**JOHN PROCTER PUTTING THE PEOPLE OF WETHERBY FIRST!**



## Parking



Solving Wetherbys Parking chaos is going to be John's number one priority for 2002. After extensive meetings with City Council officials John and his Ward colleagues Councillors David Hudson and Gerald Wilkinson have agreed a sequence of events that will ease the towns problems.

The measures will include:

- **The trial of a mini roundabout at Bridge Foot.**
- **The town being given the choice of traffic management options.**
- **Reductions in the time allowed for on street parking.**
- **The provision of more Car Parking.**

John believes the prosperity of Wetherby is at risk if we do not act to enable shoppers and visitors to easily access the Town.

## Traffic

John convened a public meeting in Collingham for villagers to address their concerns on a variety of traffic related issues directly to the Director of Highways and Transportation of the City Council.

A package of measures was unveiled, they include

- **Dynamic speed warning signs on the Harewood Road.**
- **Clear road marking notifying motorists of the change in speed restrictions.**
- **Further work to achieve a 30mph limit throughout the village.**
- **Village gateway road markings on the A58.**

John who chaired the public meeting gave a commitment to have a further public meeting to review progress and re-assess the villages traffic priorities



**JOHN HAS BEEN A MEMBER OF THE PLANNING COMMITTEE AND ITS SUCCESSOR THE PLANS PANES FOR 9 YEARS HE HAS FOUGHT TO PROTECT THE CHARACTER OF OUR VILLAGES AND STOP UNWANTED DEVELOPMENT.**

Whilst for the moment green fields are safe under a new Planning Policy Guidance note there are a number of controversial brown field sites which will be the subject of planning applications in the next few months.

City Council owned Northways School in Clifford and the former childrens home, Bramham House in Bramham are both earmarked for residential development.

**THE MAJOR APPLICATION FOR HOUSES ON LAND ADJACENT TO THORP ARCH INDUSTRIAL PARK WILL BE THE MOST CONTROVERSIAL PLANNING APPLICATION IN OUR AREA FOR SOME TIME.**



## Skate Park

**THROUGH DISCRETIONARY FUNDS JOHN HAS HELPED SUPPORT A WIDE RANGE OF CAUSES WITH THOUSANDS OF POUNDS GOING TO VOLUNTARY ORGANISATIONS IN OUR AREA AND HELPING IMPROVE THE ENVIRONMENT IN WHICH WE LIVE.**

One scheme that is currently under consideration is a skateboard facility at Deep Dale - Boston Spa.

**JOHN SAID, "AS TRADITIONAL YOUTH CLUBS ARE IN MANY AREAS NO LONGER IN VOGUE WE HAVE TO LOOK AT ALTERNATIVES TO PREMISE BASED ACTIVITIES WITH FIXED OPENING TIMES."**

*Vote Conservative*





*Investing in their future...*

Election Communication

Elmet Constituency

[www.libdems.org.uk](http://www.libdems.org.uk)



# LIBERAL DEMOCRATS

## POSITIVE POLICIES FROM THE LIBERAL DEMOCRATS

*Dear resident,*

*Thank you for the warm welcome my team and I have been receiving locally. Almost everyone remembers how the last Conservative Government left our schools and hospitals underfunded. Crime rates soared. Pensioners lost out. The railways were privatised.*

*They are also disappointed that the Labour Government has failed to make the necessary investment in our NHS, in education, in providing more police, better public transport and helping our pensioners.*

*Liberal Democrats have carefully costed plans to make real changes for the better. In this leaflet you will find positive Liberal Democrat policies for a better Britain.*

*Best wishes,*

*Madeline Kirk*



**Madeline Kirk is the Liberal Democrat Candidate for Elmet.**

**The Liberal Democrats are the Official Opposition in Leeds and are the only choice for beating Labour here.**

Printed by Paradiigmair, 6, J Gas, Todd Street, Levensay, LE1 4SX  
Published and Promoted by Ian Hooper on behalf of Madeline Kirk (Liberal Democrat) 30th at 90 Brunner Drive, Garforth, LS25 2NY.

**A REAL CHANCE FOR REAL CHANGE**





# A REAL CHANGE FOR THE BETTER

## IMPROVING EDUCATION

*Liberal Democrats will:*

- Spend an extra £110 million on books and equipment for schools
- Cut average class sizes to 25 for 5-11 year olds
- Recruit 5,000 extra secondary school teachers to reduce class sizes for 11-16 year olds
- Abolish university tuition fees and restore student grants, as we have done already in Scotland

*The Liberal Democrats are honest about our tax plans—we would pay for extra spending on education by increasing income tax by one penny in the pound.*



## SAVING THE NHS

*Liberal Democrats will:*

- Cut waiting times by recruiting more nurses, more doctors and more professionals allied to medicine
- Cut waiting times by retaining more NHS staff through increasing pay for the worst paid by an average of £1,000 each per year
- Cut waiting times by providing an additional 10,000 beds
- Keep people healthy by making dental and eye checks free and improving screening services

## BOOST PENSIONER INCOMES

Liberal Democrats will increase the basic pension by a further £5 per week, or £10 for over 75s and £15 for over 80s. Pensions for couples will increase by £8, £18 or £28.

The Liberal Democrats will pay for this and investment in the NHS by raising the rate of tax from 40% to 50% for individual earnings over £100,000 per year.

## SAFER STREETS

*Liberal Democrats will:*

- Recruit 6,000 extra police officers
- Fund 2,000 part time community officers
- Give victims greater rights to be heard in court



## GREEN ACTION

*Long-term protection of the environment is at the heart of all our policies. Liberal Democrats want to work internationally and in local communities to tackle pollution and guarantee safe and clean air and water.*

## WINNING HERE!

*The number of Liberal Democrat councillors in Leeds has more than doubled since the last General Election.*



## YES, I'm Backing the Liberal Democrats...

*Please send me more information on the campaign*

- I would like to donate:  £50  £20  £10 to help cover campaign costs:
- Please find enclosed a cheque payable to "Liberal Democrats"
- Please debit my Visa / Mastercard number:

\_\_\_\_\_

Name \_\_\_\_\_

Address \_\_\_\_\_

Postcode \_\_\_\_\_ Phone \_\_\_\_\_

E-mail \_\_\_\_\_

Signature \_\_\_\_\_

**Return to: Liberal Democrats manifesto, PA359  
4 Cowley Street, London, SW1 3NB.**



## THE EU HAS CHANGED BEYOND ALL RECOGNITION

Today's EU is not what we joined in 1973. Compare what Edward Heath said on signing us up to the Common Market with what the leaders in the European Union are now telling us:



*"There are some in the country who fear that in going into Europe we shall in some way sacrifice independence and sovereignty... these fears, I need hardly say, are completely unjustified."*

Edward Heath, 1972



*"The Euro can only lead to closer and closer integration of countries' economic policies... This demands that member states give up more sovereignty."*

Romano Prodi, President, European Commission



*"The process of Monetary Union goes hand in hand, must go hand in hand, with political integration and ultimately political union. EMU is, and always was meant to be, a stepping stone on the way to a United Europe."*

Wim Duisenberg, President, European Central Bank



*"A European currency will lead to member nations transferring their sovereignty over financial and wage policies as well as monetary affairs... It is an illusion to think that states can hold onto their autonomy over taxation policies."*

Hans Tietmeyer, Chairman, Bundesbank



*"The creation of a single European state bound by one European constitution is the decisive task of our time."*

Joschka Fischer, German Foreign Minister

# LET THE PEOPLE DECIDE

## WHO GOVERNS BRITAIN?



71% OF **YOU** WANT A REFERENDUM ON BRITAIN'S CONTINUED MEMBERSHIP OF THE EU.  
52% OF **YOU** WANT TO LEAVE THE EU.\*

Make June 7th UK Independence Day

**VOTE FOR THE UK INDEPENDENCE PARTY**

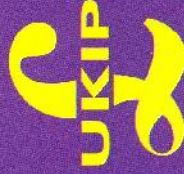
The only party guaranteed never to give up the pound or control of our economy



For more information  
and to register your support call

**0870 904 5050**

Or visit our website at [www.ukip.org](http://www.ukip.org)



\* WOLF interviewed 1,805 British adults, age 18+ between 15 - 21 March 2001. 71% were in favour of a referendum. Of those who expressed an opinion, 52% would vote to leave the EU.



## ONLY THE UK INDEPENDENCE PARTY PUTS YOU FIRST

**We are** the only party committed to campaign for a full and fair referendum on EU membership.

**We are** the only party which gives the British people clear and undisputed facts that Britain is economically and politically better off leaving the EU.

**We are** the only party guaranteed never to give up the pound or control of our economy.

**We are** the only party committed to regaining and retaining our rights to be governed by our own laws made in our own parliament by our own people.

**We are** the only party committed to keep our trade with our neighbours in Europe and to free Britain from Brussels.

## WHY YOUR VOTE IS VITAL

This is the most important election question ever- who governs Britain? With the future of Britain's democracy at stake, every single vote can help us deliver what the majority of British people want - a referendum on EU membership.

## EU LOSES PEOPLE'S SUPPORT ACROSS EUROPE

*The EU is even losing support in Germany. Only 19% of German people feel strongly about EU membership. Only 27% now support the Euro compared with 60% at its launch. And their national currency, the Deutschmark, is scrapped and replaced by the Euro in 6 months time..*

## HOW THE EU IS DISMANTLING BRITISH DEMOCRACY

EU legislation is overriding centuries of our constitutional rights and civil liberties. No other major British political party will admit it, but these undisputed facts spell out the true economic and political implications of our membership of the European Union:

- *Today's EU megastate has its own parliament, executive supreme court, currency, flag and anthem. It is planning its own written constitution, army, foreign policy, police force, legal and tax systems.*
  - *The number of EU laws has risen from 1,947 in 1973 to more than 25,000 today and only a handful were ever discussed in the UK parliament.*
  - *Once the EU acquires power from its nation states, that power is never given back.*
  - *The Common Agricultural Policy is an environmental disaster. It costs British taxpayers around £6 billion p.a. and means every person in the UK has to fork out an extra £250 a year in food costs.*
  - *Before the Common Fisheries Policy, Britain owned 80% of EU waters. We can now land only 25% of the permitted EU fish catch and many British trawlers have had to sell their rights to foreign operated fleets.*
  - *The UK receives no real EU Aid. We pay out £11 billion annually and receive just £5.5 billion back. We are subsidising bureaucracy, corruption and inefficiency throughout the European Union while our schools and health service crumble and our pensioners scrimp and save.*
- The Independence Dividend - Britain would save £20 billion a year by leaving the European Union. We'll invest that money on the low paid, pensioners, education and health services. This is one good reason why Britain is Better Off Out.**



### A message from your candidate

Dear Voter, "As your M.P., I will dedicate myself to your needs and the priorities of the constituency. In the U.K. Independence Party we care about democracy and freedom. and I will not stand by while this Labour government transfers our independence to unelected bureaucratic institutions in Brussels. I will work to ensure we are all given the opportunity to have a voice, and pledge my support for a referendum on EU membership. Our democracy is under threat. Great Britain is the world's fourth largest economy we will thrive, prosper and grow to our potential OUTSIDE the EU. We need better education, health services, and honest taxation. British taxpayers' money must not be wasted on political correctness and bureaucracy, there is much that needs to be done for Great Britain, and this must be the priority of government; voting for me and UKIP will ensure that we are heard."

Yours faithfully,

**Andrew Spence**



**The UK Independence Party is Britain's only moderate democratic political party dedicated to giving Britain back to British voters**

Don't waste your vote on

- The Tories - who forced Britain into the EU
- The Labour Party - which is keeping us there
- The Liberal Democrats - who want a Federal Europe

#### HELP THE UK INDEPENDENCE PARTY RESTORE DEMOCRACY

- I enclose a donation to help the election campaign
- I will display a poster/deliver leaflets
- Please send more information on your policies

Name \_\_\_\_\_

Address \_\_\_\_\_

Postcode \_\_\_\_\_

Telephone \_\_\_\_\_

Email \_\_\_\_\_

Send to: The Old School, School Lane, East Keswick, Leeds LS17 9 DA



**OR**



**52% want to leave the EU\***  
**71% want a referendum on the EU\***  
**Let the people decide**

**VOTE**

**UK Independence Party**

**UKIP on 7th June**  

**Vote for Andrew M Spence**

**Better Off Out**

\* MORs interviewed 1,885 adults between 12th & 21st March 2001.



## Britain is losing control to Brussels



- Control of our economy
- The £ as our currency



- Trial by Jury
- Parliamentary democracy



- British fishing grounds
- £150 Billion so far!

*and it all costs us £1.3 million an hour in tax payments to the European Union.*

**You can only stop it happening by voting UK Independence Party**  
***This constituency alone hands over £250,000***  
***of your money to the EU every week***



Fighting for Britain... Nigel Farage MEP,  
UKIP leader Jeffrey Titford and former  
Government Minister Roger Knapman

"You elected us to the European Parliament. Now is your chance to vote UKIP at the General Election. UKIP is committed to defending parliamentary democracy against rule from Brussels.

Opinion polls show that most people now want the UK to leave the European Union. 52 per cent in a recent poll said that Britain would be Better Off Out. 71 per cent said they want a referendum on the EU.

We will ensure that your voice is heard."

*Jeffrey Titford*  
Party leader



## Better Off Out



When Britain leaves the European Union, we'll receive an Independence Dividend - a massive £20 billion a year is wasted on our membership of the EU and our manifesto shows what we could do with that money. UKIP's Five Pledges:

### **Referendum on the EU**

Our MPs will campaign to leave the EU. They will press the next government for a full referendum on EU membership. 71 per cent of the British people agree.

### **Keep the £ Forever**

The UK Independence Party believes that the best people to govern Britain are the British people themselves. Keep the Pound and Keep Control.

### **Help for the Low Paid, Pensioners, the NHS and Education**

We will take a million people out of taxation...and give more money to pensioners.

### **Leave the EU**

We can renegotiate a free trade agreement, which is what the politicians told us we were joining in the first place. The British people do not want a Federal Europe.

### **A Global Future for Britain**

Outside the EU, we can have agreements with NAFTA and the Commonwealth as well as Europe.

● Vote UKIP on June 7th

● Tel 0870 904 5050

● [www.ukip.org](http://www.ukip.org)